

# INFORMATION HANDBOOK

2009

## PINE RIVERS PUMAS RUGBY UNION CLUB INC



Winner of **BJRU**  
Club of the Year  
2007 and 2008

Home Ground: Les Hughes Sporting Complex  
Baker Street BRAY PARK QLD 4500

Postal Address: PO Box 37, LAWNTON QLD 4501

Telephone Contact: 3889 7574

Website: [www.pumasrugby.com](http://www.pumasrugby.com)

## TABLE OF CONTENTS

Management Committee .....	2
Registration .....	3
Registration Fees and Club Membership.....	3
Membership / Registration Fees 2009 .....	3
Payment of Fees.....	3
KEY INFORMATION .....	4
Abusive and Offensive Behaviour.....	4
Alcohol Policy .....	4
Game Levels.....	4
Issues .....	5
Player Information .....	5
Uniforms.....	5
Player Attire.....	5
Footwear (boots).....	5
Hair (Long).....	5
Jewellery.....	5
Proof of Birth.....	5
Safety Equipment.....	6
GENERAL INFORMATION.....	7
Brisbane Junior Rugby Union (BRJU) Competition Rules .....	7
Canteen .....	7
Club Clothing .....	7
Clubhouse & Field.....	7
Club Logo .....	7
Club Rosters .....	8
Coaching / Referee Courses.....	8
Code of Conduct.....	8
Committee .....	8
Constitution .....	8
Correspondence .....	8
Development Plan.....	8
Donations and Expertise.....	8
Entertainment / Social Functions.....	8
Fundraising .....	9
Game Details .....	9
Ground Locations .....	10
Results / Competition Table / Competition Draw.....	10
Inclement Weather / Game Cancellations.....	10
Insurance.....	11
Laws of the Game.....	11
Match Officials .....	11
Medical Officer.....	11
Newsletter (Puma News).....	12
Parent Responsibilities.....	12
Photography.....	12
Representative Rugby.....	12
Safety Precaution.....	13
Seniors .....	13
Sponsorship / Advertising.....	13
Team Responsibilities.....	14
Team Lists .....	14
Web Sites.....	14
Club History .....	15
APPENDIX 1: CHAIN OF COMMAND FOR ENQUIRES / COMPLAINTS .....	17
APPENDIX 2: CODE OF CONDUCT.....	19
APPENDIX 3: Junior GROUND LOCATIONS.....	22
APPENDIX 4: SENIOR GROUND LOCATIONS .....	26
APPENDIX 5: BJRU 2008 CALENDAR (at 18 January 2008).....	28



## 2009 Presidents welcome

Welcome back to our returning club members and a warm welcome to our new members and their families.

At the PUMAS we strive to have well presented and prepared fields, fully accredited coaches and officials, properly run game days with all canteen and club facilities available for use. These are our key criteria to provide a fun, safe, family orientated environment for the social and physical development of players through the team sport of Rugby Union.

Your children will make new friends, develop new skills and learn how to work with others in a team environment, with new challenges and goals.

The 2009 season presents a number of changes to game competition rules including changing Under 8's from touch to tackle and the implementation of a range of the Experimental Law Variations (ELV's) which will vary dependant on the age group.

So everybody including coaches, managers, referees, officials, players and parents will need to learn the new rules and how they apply to each age group. This is exciting period and will present some challenges and no doubt some teething problems as the changes are adopted.

We have a fresh management committee who has been working eagerly to prepare for the 2009 season.

PUMAS has already been successful in receiving a "Club Development" grant from the Qld Department of Sport and Recreation which will assist us in our recruitment activities.



I encourage YOU to be part of the club. Take on a role and or ask how you can help.  
**An investment of your time is an investment in your child's future.**

I hope you all have a great season and enjoy both your rugby and being part of the number One junior rugby club in Brisbane.

**Mal Logan**  
**President**

## MANAGEMENT COMMITTEE

Surname	Given	Position	Mobile	Email
<b>Executive Positions</b>				
LOGAN	Mal	President	04 0030 0460	president@pumasrugby.com
ANDERSON	Wally	Vice-President	04 0989 5703	vicepresident@pumasrugby.com
LITCHFIELD	Sean	Treasurer	04 1170 4384	treasurer@pumasrugby.com
KEEBLE	Lisa	Secretary	04 2352 5566	secretary@pumasrugby.com
ROBBIE	Shane	Registrar	04 2773 1881	registrar@pumasrugby.com
<b>Sub Committee Positions</b>				
MARSH	Tim	Coaching Coordinator	04 3142 4769	coaching@pumasrugby.com
TAYLOR	Steven	Managers Coordinator	04 1778 2843	managers@pumasrugby.com
MUNDAY	Wilbur	Sponsors & Publicity Officer	04 1971 7607	publicity@pumasrugby.com
VACANT		Grants Officer		grants@pumasrugby.com
BANKS	Jason	Saturday games Coordinator	04 3891 0552	JBanks@bunnings.com.au
WRIGHT	Joe	Seniors Coordinator	04 2112 7383	seniors@pumasrugby.com
POTO	Irene	Sunday games Coordinator	04 0963 0373	ireneandshane@aapt.net.au
BROWN	Tania	Sunday games Coordinator	04 0807 0458	jtbrown@dodo.com.au
BROWN	Jason	Sunday games Coordinator	04 1815 4432	jtbrown@dodo.com.au
ANDERSON	Denise	Canteen Coordinator	04 0809 0391	canteen@pumasrugby.com
VACANT		Saturday Canteen Convenor		
VACANT		Seniors Canteen Convenor		
ALO-EMILE	Pelu	Sunday Canteen Convenor	04 1873 8364	alo-emile@bigpond.com
TAYLOR	Steven	Sunday Canteen Convenor	04 1778 2843	managers@pumasrugby.com
CARMAN	Elton	Recruitment Officer	04 1052 9904	equipment@pumasrugby.com
HAMILL	Steve	Equipment Officer	04 0248 1803	Stephen.Hamill@dva.gov.au
HUNT	Terry	Grounds Officer	04 2969 0100	building@pumasrugby.com
GREAVES	Jeff	Building & Maintenance	04 1280 8188	jbsngreaves@optusnet.com.au
CARMAN	Elton	Building & Maintenance	04 1052 9904	recruitment@pumasrugby.com
ANDERSON	Denise	Newsletter Officer	04 0809 0391	newsletter@pumasrugby.com
BROWN	Jason	Committee	04 1815 4432	committee1@pumasrugby.com
KEYS	Gerry	Committee	04 0035 0612	committee2@pumasrugby.com
VACANT		Fundraising Officer		fundraising@pumasrugby.com
VACANT		Medical Officer		medical@pumasrugby.com
VACANT		New Clubhouse Building Coordinator		newclub@pumasrugby.com

-----  
 The Pine Rivers Pumas Rugby Union Club Committee who are ALL Volunteers welcome you to the 2009 Rugby Season.

This Information Handbook is produced to assist players, families, coaches, managers and other persons directly involved in the Pine Rivers Pumas Rugby Union Club. The information provided is a guide and should you seek further clarification on any points, please do not hesitate to contact a member of the Committee. We hope you all have a fabulous season and we look forward to meeting with you during the Season.

## REGISTRATION

### Registration Fees and Club Membership

When paying the player registration fee(s), you will be required to join our Club. Under the Queensland Incorporated Associations Act - all members of the club MUST be financial members.

The PUMAS require that parents / guardian of junior players must become Members of the Club. If registering a player or players under the age of 18 years, one or both of the parents of the player(s) become Ordinary Members of the Club. In the case of registering as a player, 18 years of age or older, you become a Player Member. The cost of membership is \$20 per family.

All financial members registered as 'Ordinary Members, or Player Members' of the Club and Life Members will be entitled to one vote at the Annual General Meeting.

*We have kept fees at the 2008 rate even though there have been several increases in the general running costs of the club.*

### Membership / Registration Fees 2009

<b>Juniors</b>	Under 06 - 09	Under 10 - 15
Family Membership	\$20.00	\$20.00
Development Player Registration	\$25.00	-
First Player Registration	\$180.00	\$180.00
Second Player Registration	\$160.00	\$160.00
Third Player Registration	\$130.00	\$130.00
Subsequent Player Registration	\$65.00	\$65.00

<b>Juniors</b>	Under 16 - 17
Family Membership	\$20.00
One season Registration (Pre, Mid or Post)	\$135.00
Two or three seasons Registration (Pre, Mid and Post)	\$180.00

<b>Seniors</b>	Under 19 (Colts)	Seniors
Player Membership	\$20.00	\$20.00
Player Registration	\$190.00	\$235.00

Fees incorporate the player registration with the BJRU and QRU respectively and insurance with the Australian Rugby Union, trophy, team photograph, and use of jersey and equipment.

### Payment of Fees

Payment of fees is required at sign-on or as soon as possible from that date. Arrangements may be put in place for a payment plan, depending on your circumstances. Nonetheless all fees must be fully paid by 31 May 2008. Un-financial players will not be permitted to play, until all outstanding fees have been paid.

*All Senior players will be required to make full payment before registration will be accepted.*

## KEY INFORMATION

### Abusive and Offensive Behaviour

The club adopts a ZERO tolerance on any abusive or offensive behaviour or language used towards game and club officials, players, parents and spectators. Please read and abide by the CODE of CONDUCT found in Appendix 2.

### Alcohol Policy

Team Management and persons assisting the team, are not to consume alcohol prior to or during the Match(s) in which their team is participating.

Anyone acting as a Club Official is not to consume alcohol whilst acting in an official capacity and should be capable of driving as per the laws when acting in that capacity.

Any person who becomes intoxicated and is deemed to be breaching the Code of Conduct is to be directed to leave the venue. This includes any member of the club and all visitors.

Alcohol is restricted the clubhouse area, pergola & BBQ. All visitors must sign the register book at the canteen.

### Game Levels

There are five levels of Rugby played by the PUMAS under the BJRU and QRU competition rules. The 'PATHWAY' (Walla, Mini, Midi), Under 19 and 'OPEN'

#### **Walla Rugby: 6 – 7 years.**

As the first introduction to the game, Walla Rugby is played on a modified field to cater for the young age group, ensuring that each player will experience maximum involvement. It is a simple, non-tackling introduction to the game. It has been designed to focus on the game principles of Possession, Go Forward and Pressure; the individual skills of Passing and Receiving, Running and Evasion; and tagging; as well as the game elements of Ball take, Scrum and Lineout. Walla is played on a smaller field and with only 7 players.



#### **Mini Rugby: 8 – 9 years.**

Mini Rugby continues the theme of free-flowing running and passing Rugby action. However most importantly it introduces the young player to the contact elements of the game. It has been designed to teach the Game principles of Possession, Go Forward and Pressure with greater emphasis on the tactical principle of Support. It also teaches the individual skills of Passing and Receiving; Running and Evasion; Contact; Kicking and Tackling; as well as the game elements of Ruck, Maul, Scrum and Lineout. Mini is played on a smaller field with 10 players in each team.



#### **Midi Rugby: 10 – 11 years.**

Midi rugby is the stepping-stone to the full game. It is played between twelve or fifteen players on a standard size field, with more elements of the Under 19 game being introduced. It has been designed to teach the Game principles of Possession, Go Forward, Pressure, and Support with greater emphasis on the principle of Continuity. It also teaches the individual skills of Passing and Receiving; Running and Evasion; Contact; Kicking and Tackling; as well as the game elements of Ruck, Maul, Scrum and Lineout. Midi rugby is the final modified game before players reach U19 laws at 13 year of age.



#### **Under 19: 12 – 19 years**

Full side, full field. Under 19 rules! With Under 12 having some exceptions.



#### **OPEN (SENIORS)**

## **ISSUES**

If you have an issue, don't let it fester! Please bring it to the attention of and or discuss it with the Coach, Manager, Club Official or Committee member in an appropriate manner, time and place. Remember – all our officials are VOLUNTEERS!

For further information please refer to Appendix 1 – Chain of Command for Enquiries/Complaints.

## **PLAYER INFORMATION**

### **Uniforms**

All players are required to wear navy Blue shorts with the Pumas logo and club socks. (available through the club).

### **Player Attire**

The club provides a kit of jerseys for use on game days. The club retains ownership of the jerseys. Players are required to purchase and wear Club shorts, Club socks and appropriate footwear.

### **Footwear (boots)**

Footwear is to be worn whilst playing and the following restrictions are not negotiable:

#### **Under 6 to 10**

Are to play in sports shoes (joggers/runners), moulded football boots, or blades. Under no circumstances is any type of screw in boot tag permitted. Referees are instructed to check boots before each game for sharp edges and tags

#### **Under 11 and Older**

Football boots should be worn in age groups Under 11 and older.

#### **Boot Tags**

Shall be no more than 18mm in length and be of such composition that no sharp cutting surfaces exist. Any player not conforming is not to take part, or any further part in the match, until the item conforms to the above restrictions.

### **Hair (Long)**

Especially for U8s up, where possible should be underneath headgear (especially if in a pony tail or braided). Why? It is tackle rugby, and the chance is always present that an opposition player whether in a game or at training, could be tempted to grab and swing by the hair. This is of course painful, but also presents the possibility of neck injuries. Beads are not allowed in hair unless covered by headgear.

### **Jewellery**

Is not to be worn whilst playing or training, this includes watches, earrings, hair beads, other body piercings etc

### **Proof of Birth**

Proof of Birth can be either a Birth Certificate or Extract, Passport or Drivers license. This must be sighted by the Club Registrar or his appointed delegate before a player can play any game. This is not negotiable and there are severe penalties for not complying, especially for the team.

It can be produced at Sign on or on the Main Training night. Do not blame us if the player is stopped from playing, it is your responsibility as an adult to ensure it is produced.

## **Safety Equipment**

### **Mouth Guard**

We recommend that all players should wear mouth guards both at training and during games.

Two main types:

Do it yourself, which can be purchased from a Chemist or at the Canteen. It is suggested that Managers buy a couple at the beginning of each season for re-sale and have them on hand in case someone forgets.

Moulded type, best option and most expensive, most of which you get back in rebate if you are in a Health Fund. We will have a Dental Technician visiting the Club early in the year to provide this type of mouth guard at a reduced cost. Otherwise, look up Yellow Pages under Dental Prosthetics, or go to your Dentist.

### **Head Gear (optional)**

It should be as light as possible and adjustable. Be careful with style. Some of the types worn by Rugby League players are not legal in Rugby; they should carry the IRB logo.

### **Shoulder Pads (optional)**

These are an optional item and not really necessary unless you are protecting an old injury. Ask your coach if unsure, as there are strict requirements. The types worn by Rugby League players are not legal in Rugby; they should also carry the IRB logo.

### **Water Bottles**

The Club supplies Chin Sip water bottles, with each team having more than enough. If you have health concerns ensure the player brings their own, clearly marked, and gives it to the Team Manager at games. Players are to bring a water bottle to training sessions. They should also bring one to games so they can hydrate both on the way to the game and on the way home. Traveling in an air conditioned car causes dehydration, so if the trip to the game is around an hour drinking approx 750 ml water is recommended.

***Safety Hint** - water from a water bottle or spray should not be projected down a player's throat let them drink from it in their own time. If you are unsure how to use the chin bottle correctly ask some one from your team coaching staff. Bottles that are not used properly have to be removed from use until they can be cleaned. It is in the interest of all team players to ensure that they are used correctly as to prevent the spread of illness.*

## **GENERAL INFORMATION**

All Junior players are covered by the Brisbane Junior Rugby Union (BJRU) Competition Rules. Whereas Colts and Senior players are covered by the QRU Rugby Competition Rules.

### **Brisbane Junior Rugby Union (BRJU) Competition Rules**

The BJRU Competition Rules, which has parts pertaining to age groups and contains the rules that govern how the competition is to be conducted can be found at:

<http://www.qweb.com.au/bjru/admin/rules.zip>

or the BJRU Club Handbook, Vol 1 Administration (a White A4 Folder), which is held in the Club House. It is there for your use, but do not remove from the Clubhouse.

Team Management is especially asked to ensure they read through them and understand the consequences to their Team, players and themselves if they breach the rules. Parents are also asked to read them, but to assist in this there is a section in each newsletter that deals with various rules.

Please remember to stay behind the sideline barrier when watching games during the season. This is a BJRU rule for the safety of the players and the spectators. Don't hesitate to ask any visitors to abide by this rule.

*"Ignorance is not an Excuse"*

### **Canteen**

Volunteers stock and operate the canteen. The canteen sells a range of food and drinks for the benefit of Club members, players and supporters. The proceeds from the Canteen are a major source of income for the Club.

Your team manager will talk with you early in the season regarding a roster to staff the canteen during home games. Please assist by helping out, it's also a great way of getting to know other club members.

### **Club Clothing**

The club has a range of playing and social clothing. Come to the canteen and have a look. We encourage players to wear their club shirt to and from games. This helps build a good club image.

### **Clubhouse & Field**

As the grounds are open to use, it is recommended that everyone always wear or bring alternate footwear, as walking around both inside & outside without footwear may not always be safe, i.e. sticks, broken glass, or sharps!

*"No Bare Feet - You have been warned"*

### **Club Logo**

As you would be aware, the Club logo is the Roaring Puma with the words 'Pine Rivers Pumas Rugby Union' around the "Puma". The origin of the word 'Pumas', and the colour of our jersey, are taken from the Argentinean Rugby Team.

**NB: The Club logo and or the Club's name cannot be used on any item without the knowledge and permission of the current Management Committee.**

## **Club Rosters**

As we are a volunteer organisation, it is requested that everyone help out with tasks such as Game Day Set Up, Setting Up and Dismantling of the Fields, Canteen Roster – both at home games and training nights, and other tasks as the need arises.

Roster requirements are allocated by team. Team Managers then roster those in the team to the tasks, this includes washing jerseys. Roster requirements for a Team are included on the draw.

## **Coaching / Referee Courses**

The Queensland Rugby Union Ltd (QRU) conducts Coaching and Refereeing Courses regularly. If you would like to undertake either a Coaching or Referee course, contact the Registrar, Coaching Coordinator or any Committee member for details on the dates of the next Courses.

## **Code of Conduct**

The Code of Conduct has been developed by the BRJU. See Appendix 2

## **Committee**

See the list in the front of this Handbook for a current list of Management Committee members and their contact numbers. Please feel free to contact any of the Committee members on any queries or suggestions you have regarding the Club. If you are interested in any of the vacant positions on the Committee or would like to assist the Club in any way, please contact the Secretary.

## **Constitution**

The Constitution is too lengthy to incorporate in this Handbook. If you would like to see a copy, please contact the Secretary.

## **Correspondence**

All correspondence is to be directed to the Secretary.

## **Development Plan**

The club has a working 5 year development plan. If you would like to see details of the plan please contact the Secretary.

## **Donations and Expertise**

The Club is always after a whole range of items to upgrade equipment, facilities and to replace items that will need replacing in the near future. Some examples from the past are Hose Reels for boundary ropes, First Aid Tool Box for Team Managers, Shade structure & Cold/Hot Packs for First Aid, and so forth. From time to time a list will be published in the Newsletter or on the notice board of those items we are seeking.

Before purchasing / acquiring an item check with a Committee member to ensure that it is the correct type for that item.

Expertise is always in demand, so if you are willing to put your skills to use for the club, such as, Electrician, Plumber, Builder, Accountant, etc, let us know. You never know when you may be able to help the club and the children playing Rugby.

## **Entertainment / Social Functions**

A couple of these are organized throughout the year by the Entertainment Committee and are designed to be fun nights where the adults can mix and enjoy the company of those within the Club, meet new friends or just network.

If you wish to do something as a team(s) let the Committee know, i.e. BBQ after the game etc. Without Committee approval you may not be covered by insurance.

The club's premises and facilities may be hired subject to approval by the Management Committee. (Please use the nominated form to submit to the committee)

## Fundraising

We would not survive without it. It offsets our budget, paying for things such as jerseys, training equipment; end of year function, improvements, and the list goes on.

The Committee has managed to keep Registrations Fees low, and to maintain this trend we all need to either participate, or pay their way.

Other than this we may run a Minor Art Union, or the odd raffle, which you are requested to participate in. Any ideas on fundraising would be appreciated. Donations of items for raffles & entertainment nights are welcome at anytime - see the Fundraising Officer or a Committee Member.

## Game Details

Game draw details will be provided on the Club website and in the Club Newsletter each week. Occasionally game details are changed after the printing of the Newsletter. Please check with your Team Manager at training each week to ensure the information provided is still correct.

### Playing Times

These are the same every week, except for on the Labour Day weekend when all U13 - 17 teams are allocated by age group to a specific venue, (see Calendar in Appendix 4).

Other circumstances are due to overuse of fields, i.e. too many games at a field in an age group, or teams agree to a time change etc, or it is a carnival.

All changes must be approved via the Club Committee to the Competition registrar.

### Saturdays (Juniors and Seniors)

Age Group	Kick Off	Halves	Age Group	Kick Off	Halves
Under 6	08:30 am	15 mins			
Under 7	09:10 am	15 mins	Under 19 (Colts)	12:30 pm	30 mins
Under 8	10:00 am	20 mns	Seniors B	01:50 pm	35 mins
Under 9	10:50 am	20 mins	Seniors A	03:10 pm	35 mins

### Sundays (Juniors)

Age Group	Kick Off	Halves	Age Group	Kick Off	Halves
Under 10	08:30 am	20 mins	Under 14	12:20 pm	25 mins
Under 11	09:20 am	20 mins	Under 15	01:20 pm	25 mins
Under 12	10:20 am	25 mns	Under 16	02:20 pm	30 mns
Under 13	11:20 am	25 mins	Under 17	03:30 pm	30 mins

All games in all age groups have a 5 minute half time break

## **Pre Season Draw**

### **Under 6 to Under 9**

All 3 games issued at once the week prior to the 1<sup>st</sup> game.

### **Under 10 to Under 15 (Grading)**

2 weeks at a time - be prepared for changes even the day before.

### **U16 & 17**

There are 3 competitions for these age groups. The Mid-Season is conducted whilst the School Competition is on with Pre & Post either side of it. Draw is issued the week prior to the start of each.

## **Regular Season Draw**

The draw for the remainder of the season is released the week prior to the competition starting. Unfortunately amendments do occur and these are passed on to you via the Puma Lineout newsletter, or the Team Manager.

## **Ground Locations**

Directions on how to get to each ground are contained at the end of this document (Appendix 3). Note that it uses the latest page/map references (keep it in the car). Any changes are to be notified in the newsletter. It is also available at the Pumas and BJRU websites.

## **Results / Competition Table / Competition Draw**

Results are published in the Puma Lineout newsletter, as are changes to the Draw. The above three items covering the whole of Brisbane are available at

<http://www.qweb.com.au/bjru/index.asp>

They will always have a "correct as at" date on them. Note that results once posted on this site are not necessarily updated. Results normally up by Monday night, Tables by Thursday night at the latest.

## **Inclement Weather / Game Cancellations**

Generally games are played even if it is raining. If it has been raining heavily for a period of time and the grounds are potentially unplayable you should note that the following occurs:

### **Training**

Generally if it is raining training will still be on, the Coach will make the decision to call it off and will inform the team.

### **Thunder & Lightning**

If thunder and lightning is in the vicinity, training is to cease immediately and players move under cover.

### **Cancellations**

#### **Game cancelled (Night before)**

The Manager is to ring you using the contact system set up within the team (generally a Phone Tree, manager rings three or four and they subsequently ring three or four, calling back the Manager when everyone has been informed or otherwise).

#### **Cancelled on (Game day)**

This will occur from 7 am with the Committee informing Managers, who will then ring you. Please do not ring before 7.30 am as you will delay the system as outlined above.

### **No Contact**

If after 7.30 am you have not been contacted, ring the Manager, then the Coach and lastly the President. If it is a Home Game the President could be at the ground, so ring his Mobile number and if all else fails ring the Ground 3889 7574 and ensure you let it ring as the Ground Set Up could be occurring.

### **All else Fails**

Ring the ground at which the Game is being played. If none of the above is successful, I would suggest that the game is on and everyone is on their way, or is busy setting up.

### **Insurance**

Insurance cover is very basic and is aimed at serious injuries, as opposed to a twisted ankle. Ensure you read the Pamphlet that is issued by the Insurer, which will be given out and placed on the Notice board. If you need to make a claim, you should do so via the Club Secretary. The Club recommends that each player have their own private medical / hospital cover and insurance.

### **Laws of the Game**

Additionally all of us can assist by ensuring we read the Laws concerning a particular age group - these Pathway Laws, WALLA, MINI, MIDI & Laws of the Game (including U19 Variations) cover how the game is played at that level. These can be found at BJRU web site at:

<http://www.qweb.com.au/bjru/>

For those without access to the internet there is a copy of these documents in the BJRU Club Handbook Vol 2 Laws (a Red A4 Folder), which is inside the Club house for your use.

*“Ignorance is not an Excuse”*

### **Match Officials**

#### **Referees**

Referees for Under 6 through to Under 9s are organised by the Team Managers or Coaches using a number of parents who have completed the necessary courses. The Queensland Rugby Referees Association supplies referees for older teams.

Don't forget if you are interested in undertaking a Referee Course; contact someone within the committee as soon as possible.

#### **Touch Judges**

Touch Judges for Under 6 and Under 7s are organised by the Team Managers or Coaches using a number of parents who have completed the necessary course. Teams from Under 8 upwards must supply a qualified Touch Judge for all games. The Club will be organising a course as early as possible in the season so that each team has enough Touch Judges to share the duty.

If you are interested in undertaking a Touch Judge Course; contact someone within the committee as soon as possible. The course goes for approximately 2.5 hours and will be held at the clubhouse. The more parents in each team qualified as Touch Judges, the less games you will need to do.

### **Medical Officer**

The club is required to provide First Aid for each HOME game. Unless first aid officers are in attendance, games are NOT allowed to proceed.

Each team must provide their own First Aid personnel. If you have at least Level 1 First Aid or you are willing to undertake training, please contact the Secretary. The Club will subsidise the costs of attaining First Aid qualifications.

## **Newsletter (Puma Lineout)**

The Club produces a weekly (during the season) newsletter designed to provide a range of information regarding the players and the activities happening around the Club. As well as the general information, each Coach is strongly encouraged to write a short match report.

Newsletters are distributed via email, so please make sure you have passed on your email address to Shane Robbie (Registrar). There will be a small quantity of newsletters at the club, for those members without email.

If you have any contributions – news, photographs, funny stories or experiences, please contact:

newsletter@pumasrugby.com

## **Parent Responsibilities**

Besides those in the Code of Conduct:

- Arrive as the Coach / Manager directs, or at least 30 minutes prior to the start of the game, to ensure warm up time. For Training be there at the Start Time
- Fulfil Team Responsibilities - see next Section
- Notify Manager / Coach if a player is unable to attend, thus enabling time to organise a replacement, or alternate plan. Remember if you can't make it, but the player is available, we will organise for pick up and return. Ring the Manager or President.
- Assist in Fundraising activities to the best of your abilities.
- Be positive.

## **Photography**

At most games, clubs have authorised certain persons to either take photographs or video the game. Many teams video their games for training purposes, and even video their potential opposition leading into finals. In addition to this, parents often also want to take photographs.

Any player photographed must be fully clothed. Concerns such as those in Surf Lifesaving are not applicable. Let's keep a commonsense approach. If you are concerned about someone, tell a committee member.

### **Team Photo's**

Keep an eye on the newsletter for the dates and times for the Team Photographs. These are usually taken around July. Each Under 19 player receives a team photo at the end of season. The costs of team photos are built into Registration Fees.

## **Representative Rugby**

The Pumas are within the Brisbane North Region. Skills Development teams are selected for Under 12 and Representative Teams are selected in the age groups Under 13 through to Under 17. Parents must bear the cost of players participating in representative teams.

### **Selections**

These occur on the Labour Day weekend each year. Normal games are played on the Sunday at which the selectors view and pick the players. Keep in mind that they have also been out during the grading games and for U17 they view all the pre-season games.

Within the age groups U13 to U17, Possible V Probable sides are selected. Players are generally informed of their selection for this game either at the game, or later that Sunday evening. Venue & timings will be given at that time and they are to turn up in playing gear, with a water bottle.

Possible V Probable play the next day - Labour Day Monday. Timings are U13 & 14s 10 am - 12 noon, U15 & 16 12 noon – 2 pm. From these they pick 22 players and shadow players (shadow players are not always informed). Confirmation of selection will be issued over the following days and at the latest by the following Friday.

### **U12 Skills Development Teams**

Two (2) teams of eighteen (18) players per Region are selected at the same time as the U13 - 17s, NOTE: they do not have Possible v Probable games.

They normally train Monday nights as do the U13 - 17.

They participate in a Carnival on the first weekend of the June School Holidays at a Brisbane Club. Note this is a Brisbane only carnival and is not a championship.

It is also safe to say that not all the “best” players are selected, due to the huge pool of players and limited time in which to conduct the selections. Next Year.

### **QJRU State Championships Under 13 - 17**

To be selected in any of the Brisbane Region sides for the QJRU State Championships, the player must be playing club rugby. They train on Monday evenings and the State Championships are conducted over 5 days at Nudgee College (Friday is a spare day), commencing on the first Wednesday of the June School Holidays and ending on the Sunday, with some of the finals at Ballymore. Remember there is always next year and history tells us that from year to year different players are selected due to growth, skill improvement, and not least, the vagaries of those making the selections. Coaches can only follow a team for a maximum of two years and this provides different coaching styles and selections.

Be aware if a player is selected payment for them falls on the parents. If there are any problems approach the committee.

### **Safety Precaution**

It is recommended that all players provide their own water bottle – this is to minimize the risk of transmitted infections.

Our fields have been built on a former council rubbish dump. For this reason, any open cut or scratch should be washed with fresh water & covered as soon as possible. Each Team Manager will have a First Aid Kit on hand at all times.

### **Seniors**

Our club has fielded its own Seniors team in last few years, which proved a great success. Both Seniors and Colts teams are now an important part of our club and allows our junior players the opportunity to play senior football and remain with our club. Seniors players have been very supportive of our club, with helping junior teams with training and also taking active parts within the clubs committee.

### **Sponsorship / Advertising**

The Club is always looking for avenues to raise funds and create savings. If you know someone who is interested in any form of sponsorship, tell a Committee member. Remember it does not have to be money; it could be services or material.

The committee owns the PUMAS logo and any form of expression relating to Pine Rivers PUMAS Rugby Union Club. The use of logo or club name on any material (particularly clothing) MUST be authorised by the committee.

## **Sponsorship**

The Club has unlimited options with Sponsorship: Jerseys, Shorts, a specific team/s or the Clubs Major Sponsor. Signage, First Aid, Score Board, Goal Post Pads, Corner Posts etc are also options. A Team Sponsor receives as part of its package a sign on the Sponsors Board, weekly notation in the newsletter and also on our Pumas Website.

## **Advertising**

One avenue is to advertise in the Newsletter, either for a small fee or as part of their sponsorship. All Sponsors receive advertising in the Newsletter and on our Web site.

## **Team Responsibilities**

Each Team is required to fill the following positions in a team:

- Coach (Accredited)
- Assistant Coach (preferred & accredited)
- Manager
- Touch Judge – Accredited for U8 up
- Sports Trainer (min qualification 1<sup>st</sup> Aid Cert)

The Club subsidises the costs for courses, please contact a committee member if you are interested. Teams have rostered tasks such as: Canteen Duty, Ground Set Up & Dismantle, Field Marshal, sell raffle tickets etc. Your team Manager may also prepare a roster for things like:

- Washing team jerseys after each game
- Supply the oranges / bananas for half-time

## **Team Lists**

After all the teams have been registered, each family will be provided with a list of players' names and contact numbers for their team.

## **Web Sites**

When looking for anything to do with Junior Rugby first go to one of the Web sites below, as what you find on the QRU or ARU site may not be exactly what the BJRU Competition dictates, i.e. Pathway Laws, we do a couple of things differently in U11 & 12s.

Our Web Site is: [www.pumasrugby.com](http://www.pumasrugby.com)

This includes a number of links to associated bodies.

BJRU Web Site is: <http://www.qweb.com.au/bjru>

## **CLUB HISTORY**

The Club was started in 1985 by a group of enthusiastic parents. With no Clubhouse, no fields and no jerseys, the Pumas used the local show grounds as their home grounds and played in Tee Shirts with the logo of a reclining puma in blue and white boldly printed on their shirts. The original Committee Members included President - Peter McBarron; Publicity Officer - Terry O'Connor; Secretary - Peter Hovey; Treasurer - Peter Lewis; Michael O'Connor, Peter Bigg, Peter McGinn and Tony Leeds.

Today the Pumas have two fields at the Les Hughes Sports Complex, which were leased from the Pine Rivers Shire Council in January 1987. The building of the Clubhouse commenced in October 1989 and was completed in 1990, as funds became available. This project was undertaken by a group of enthusiastic parents led by Maurie Saccu, Peter McGinn and Keith Walton plus many "hands-on" volunteers. In 1992 the Club installed the first of the field lights, in 1995 the Number 1 field was irrigated by Aussie Water Gear and the scoreboard was erected. At the AGM in November 1988 the Club changed its name from the Pine Rivers Pumas Rugby Union Club Inc to the Pine Rivers Pumas Junior Rugby Union Club Inc and thereafter fielded teams in the Brisbane Junior Rugby Union competition exclusively.

The Club has had a number of winning Premiership Teams, the first being in 1991 - Under 13's a division one team. The ball from this game was signed by the players and has been made into a display trophy.

The Club has won the Queensland Junior Rugby Union President's Trophy four times, first in 1989 for their outstanding contribution to rugby during that season and again in 1998 under a changed format and more recently in 2007 and again last year. This award is presented in recognition of the performance of the Club's players from all age groups plus parents and committee on and off the field.

A number of special awards are presented each year to people who have performed above and beyond the call of duty. The first of these awards is the President's Trophy. The recipient of this award is selected by the President for their extraordinary commitment to the Club during the season. The award was first presented in 1989 and in 1991 a perpetual trophy was established and is presented to the member along with an individual trophy

In 1998, a new Award was presented by Junior Pelesasa to a member who had excelled on behalf of the Club - the Kalala Senio Pelesasa Award in memory of his mother who was a great supporter of the Club and passed away in 1997. The first winner of this award was Christine Atchison.

In 1990 the first Life Membership was awarded in recognition of outstanding contribution to the Club over a long period of time. Subsequent awards were presented in 1993, 1994, 1997, 2005, 2006 and 2007.

Our Life Members are:

- Terry O'Connor
- Peter Bigg
- Lawrence McGregor-Lowndes
- Aileen McGregor-Lowndes
- Shane Robbie
- Malcolm Logan
- Christine Atchison

Also in 1994 "the hill" overlooking the fields which have been so tirelessly looked after by Peter Bigg was named the "Peter Bigg Hill" in recognition of his many years of hard work.

The Equipment shed was named after Mark Willis in recognition of his efforts in securing grant funding for lights, facilities upgrades and equipment shed.

Both fields have also been re-capped in recent years thanks to support from Pine Rivers Shire Council. Field line marking / barrier posts were installed in 2006. In 2007 Shade structures were erected between the fields.

## REP Players

The Club's two most successful players are Drew Mitchell and Junior Pelesasa. Both these players still keep in contact with the "Pumas" and are regular visitors to the Club. Junior has nephews playing at the Club.

Drew Mitchell was named in the Wallabies in 2005 and played his first game during the tour of England and France, and both Junior and Drew are currently contracted to play with the Western Force.

### Junior Pelesasa and Drew Mitchell Profiles

#### Junior Pelesasa

Junior moved to Australia from New Zealand at 16, and has since represented Australia at Schoolboy, U21 and 'A' level. A centre with a great ability to fend off opponents, he also spent two years with the Brisbane Broncos rugby league squad. Off the field, Junior is a bit of a musician and can play the guitar, the piano and the drums. He has also studied massage therapy.

Web Address: [http://www.rugbywa.com.au/players/junior\\_pelesasa,30461.html/section/54680](http://www.rugbywa.com.au/players/junior_pelesasa,30461.html/section/54680)  
Position: Centre  
Height: 180cm  
Weight: 96kgs  
Date of Birth: 17 Oct 1980  
Super 14 Team: Western Force  
Super 12/14 Points: 45 (9 tries)  
Super 12/14 Caps: 51  
Honours: Australia A (2005)  
Australian U21s (2001)  
Aust Schoolboys (1998)

#### Drew Mitchell

Drew made a triumphant return to Test rugby in 2007, playing all but one of the Wallabies winter Tests. His major assets are his genuine speed and ability to find the try line, which were captured in his sensational rookie year of 2005 where he netted six tries from his first ten Tests.

Having followed the traditional pathway of age representation at both state and national level, Mitchell is a true product of the Australian Rugby Union High Performance system.

Web Address: [http://www.rugby.com.au/players/wallabies/2008\\_squad/mitchell\\_drew,96039.html](http://www.rugby.com.au/players/wallabies/2008_squad/mitchell_drew,96039.html)  
Position: Wing / Fullback  
Height: 182 cm  
Weight: 95 kgs  
Date of Birth: 26 March 1984  
Super 14 Team: Reds 2003 - 2006, Western Force 2007 -  
Super 12/14 Points: 70 (14 Tries)  
Super 12/14 Caps: 60  
Test Debut: Aust v South Africa (Sydney, 2005)  
Test Caps: 29  
Test Points: 85 (17 Tries)  
Honours: **2001** Captained the Australian Schoolboys for their UK Tour.  
**2003** Represented Australian Under 21s at the IRB World Championship in England.  
**2004** After a strong debut season of Super 12, playing all 11 matches for the Reds, he was named as a bolter for the Spring Tour where he played against the French Barbarians and was later named in the Wallaby 22 for the Test against England at Twickenham. He also captained the Australian Under 21s team at the IRB World Championship in Scotland.  
**2005** After topping the try-scorers list for the Reds in the Super 12, he was included in the Wallaby squad for the domestic season and earned his first chance to impress at Test level against South Africa in Sydney, scoring a try in the process.  
He was later named Wallaby Rookie of the Year after scoring six tries in 10 Test appearances.  
**2006** Started every Super 14 match for the Reds but was overlooked by Wallaby selectors for the domestic series and Tri Nations, returning for the Spring Tour where he played a role in mid-week victories over Ireland A and Scotland A.  
**2007** After struggling to find his feet in the fullback jersey early in the season, his game-breaking qualities came to the fore in his debut season with the Western Force playing in every game of the Super 14 season. Returned to Wallabies for the domestic Test season then headed to France for Rugby World Cup, scoring seven tries in five appearances, which made him the second highest try-scorer at the tournament.  
**2008** Surpassed a half century of Super rugby caps, playing 12 matches for the Force to take his career tally to 60. Appeared for Australia A in the Pacific Six Nations Cup before returning to the Wallabies in time for the Tri-Nations, where he featured on four occasions. Added a further four caps on the Spring Tour, which included a try-scoring double against the All Blacks during the historic Test in Hong Kong. These were the only tries that New Zealand conceded across the five Tests it played on the successful Grand Slam tour.

## **APPENDIX 1: CHAIN OF COMMAND FOR ENQUIRES / COMPLAINTS**

### **Aim**

The aim of the Chain of Command is to:

- a. Ensure that matters are directed in the first instance to the most appropriate person; and
- b. That it is resolved at the lowest level possible;

Below are some points to assist you in achieving this aim and also a diagram showing the recommended Chain of Command.

### **Resolving the Problem**

Most problems that arise fall into two categories:

- a. Lack of Organization - such things as field set up, lack of officials. These can be resolved by bringing the matter to the attention of the Opposition Manager / Coach, or to Hosting Club Officials. Provide advice and / or assistance, help set up and in the case of Officials, i.e. Referee or Touch Judge provide one if you are able to, even Medical.
- b. Honest Mistakes / Lack of Knowledge - similar to above and if brought to their attention it is normally corrected immediately.

### **Avoid Confrontation**

Don't be accusatory when approaching others, reconcile the matter calmly and if this is not possible then follow the diagram. Do not get into arguments.

**Always Remember** - Almost all persons involved in Junior Rugby are volunteers and the rugby community needs them involved, not sitting on the sideline because someone has soured the experience.

We are there for the Players' (of both Teams) enjoyment and development, not you or your supporters perceived interpretations or goals.

### **Competition Rules / Laws of the Game / Club Procedures**

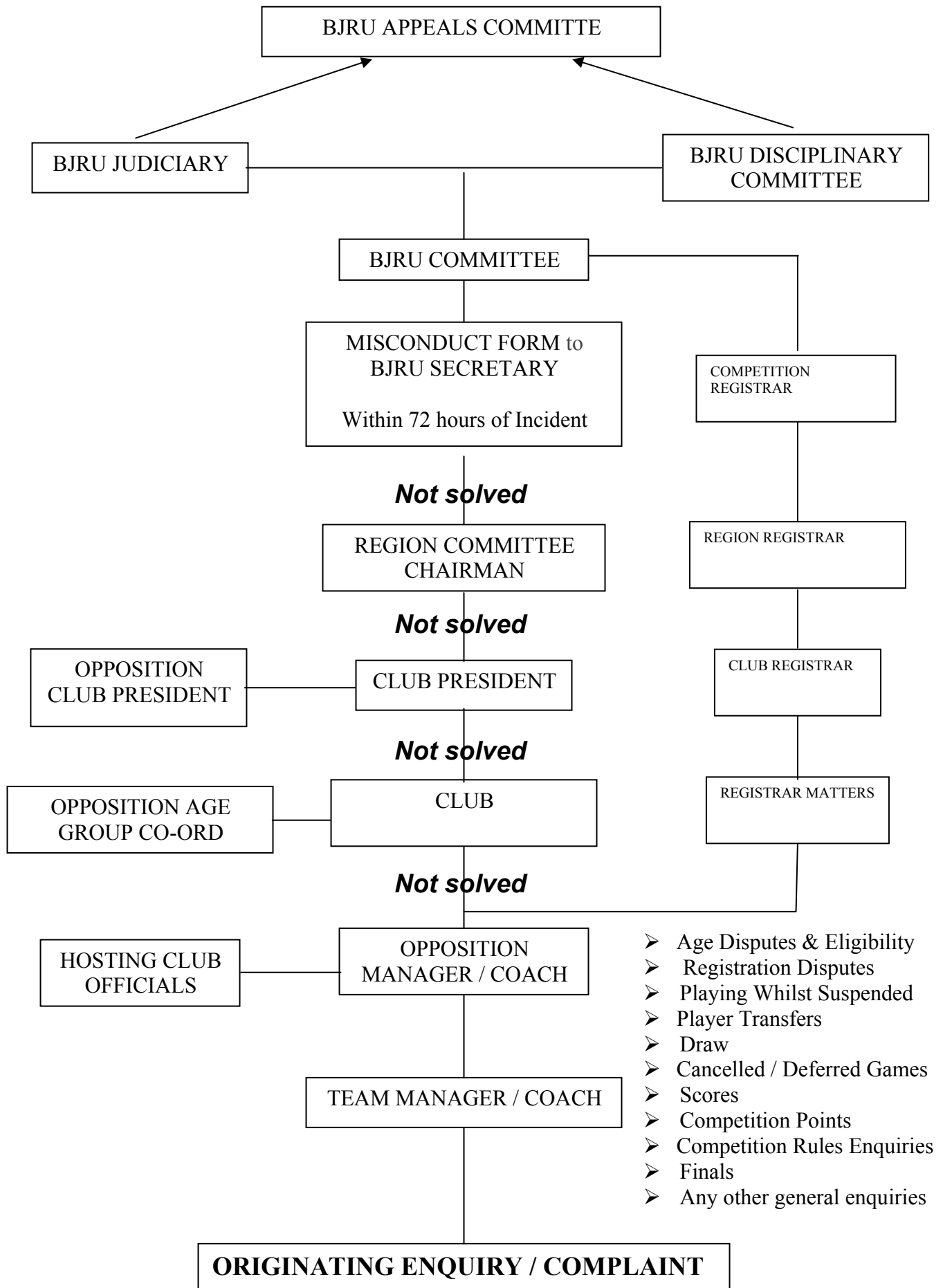
Reference should always be made to the Competition Rules, appropriate Laws of the Game and any Club Procedures before proceeding with any complaint.

### **Passage of Information / Recording**

As the procedure below is followed, ensure that:

- a. All are kept informed and that outcomes are communicated to all concerned; and
- b. A record is kept for future information, i.e. re-occurrence of problem with same team.

Recommended Procedure – Diagram:



## **APPENDIX 2: CODE OF CONDUCT**

The Code of Conduct for Administrators, Coaches, Managers, Referees, Players, Parents and Spectators is reproduced below. Ensure you read it and have players read their section and/or explain its contents to them.

### *“Ignorance is not an Excuse”*

#### **INTRODUCTION**

This code is designed:

- To maintain the element of enjoyment and satisfaction in Junior Rugby.
- To make adults aware that young people play to satisfy themselves and not necessarily to satisfy adults or members of their own peer group.
- To improve the physical fitness of youth by making it attractive, safe and enjoyable for all young people.
- To constantly remind Administrators, Coaches, Referees, and Parents, that Rugby must be administered, taught and provided, for the good of those young people who wish to play the game.

#### **ADMINISTRATOR'S CODE**

1. Ensure that equal opportunities for participation in Rugby are made available to all irrespective of ability.
2. Do not allow the game to become primarily spectator entertainment.
3. Equipment and facilities must be appropriate to the maturity level of the young players.
4. Rules and length of schedules should take into consideration the age and maturity level of the young players.
5. Remember that play is done for its own sake. Do not emphasise the need for awards.
6. Distribute the code of conduct to spectators, coaches, players, referees, parents and teachers.
7. Ensure that parents, coaches, sponsors, doctors and participants understand their authority and their responsibility for fair play in Rugby.
8. Ensure adequate supervision is maintained at all games.
9. Behave in a manner to set an example for all participants.
10. Do not approach a referee/touch judge at any stage during or immediately after a game.

Remember, the QJRU Management Committee and BJRU Competition Committee have the power to cite Players, Coaches, and/or Spectators for behaviour that may bring the game of Rugby into disrepute.

#### **MANAGER'S CODE**

1. Encourage parents to take an active interest in the Team.
2. Encourage parents and supporters to talk to opposition spectators.
3. Encourage supporters to praise good play by both teams.
4. Discourage supporters from excessive barracking.
5. Provide administrative assistance to the Coach including full knowledge of the Competition Rules and paperwork requirements.
6. Be fully informed of Rugby requirements and matters affecting your team.
7. Look after injured players while they are not able to take the field.
8. Ensure that players are aware of representative trials and if selected, they are fully aware of their commitments and that they know of their selection.
9. Insist on an appropriate standard of team behaviour both on and off the field.
10. Set an example in terms of behaviour.
11. Do not approach a referee/touch judge at any stage during or immediately after a game.

Remember, the QJRU Management Committee and BJRU Competition Committee have the power to cite Players, Coaches, and/or Spectators for behaviour that may bring the game of Rugby into disrepute.

## **COACH'S CODE**

1. You have responsibility for the behaviour of your team and its supporters. **EXERCISE IT.**
2. Be reasonable in your demands on the young player's time, energy and enthusiasm. Remember that they have other interests and demands on their time.
3. Teach your players that laws of the game are mutual agreements, which no one should evade or break.
4. Ensure that all players get a game. The 'just average' players need and deserve equal time.
5. Remember that young people play for fun and enjoyment and that winning is only part of it. Never ridicule or yell at the players for making mistakes or losing a game.
6. The scheduling and length of practice times and games should take into consideration the maturity level of the players.
7. Develop team respect for the ability of opponents, as well as, the judgement of referees and opposing coaches.
8. Follow the advice of a doctor in determining when an injured player is ready to play again.
9. Remember that young people need a coach they can respect. Be generous with your praise when it is deserved and set a good example.
10. Make a personal commitment to keep yourself informed on sound coaching principles and the principles of growth and development of young people.
11. Encourage young people to develop basic skills and avoid over-specialisation in positional play during their formative years.
12. Create opportunities to teach sportsmanship, just as you would in teaching the basic skills.
13. Ensure that efforts for both skill improvement and good sportsmanship are rewarded by praise.
14. Ensure that skill learning and free play activities have priority over highly structured competitions for very young people.
15. **INSIST ON FAIR PLAY.** Do not tolerate foul play, fighting, or foul language. Be prepared to take off an offending player.
16. Discourage excessive talk on the pitch.
17. **INSIST** on a disciplined approach by players and mean what you say.
18. Set a good example by personal good behaviour.
19. Do not approach a referee/touch judge at any stage during or immediately after a game.

Remember, the QJRU Management Committee and BJRU Competition Committee have the power to cite Players, Coaches, and/or Spectators for behaviour that may bring the game of Rugby into disrepute.

## **PLAYER'S CODE**

1. Play for the 'enjoyment', not just to please your parents or coach.
2. Play the laws of the game of Rugby
3. Never argue with the referee's decisions. Let your captain ask any necessary questions.
4. Control your temper - no 'mouthing off'.
5. Work equally hard for yourself and your team - your team's performance will benefit and so will your own.
6. Be a good sport. Applaud all good play, whether by your team or by your opponent.
7. Treat all players, as you yourself would like to be treated. Don't interfere with, bully or take unfair advantage of any player.
8. Remember that the goals of the game are to have fun, improve your skills and feel good. Don't be a show off or always try to get the most points.
9. Co-operate with your coach, manager, team mates, referee and opponents, for without them you don't have a game.
10. Do not approach a referee/touch judge at any stage during or immediately after a game.

Remember, the QJRU Management Committee and BJRU Competition Committee have the power to cite Players, Coaches, and/or Spectators for behaviour that may bring the game of Rugby into disrepute.

## **REFEREE'S CODE**

1. Ensure that "over-refereeing" the game does not lose the 'spirit of the game' for young people.
2. Actions speak louder than words. Ensure that both on and off the field your behaviour is consistent with the principles of good sportsmanship.
3. Compliment both teams on their good play whenever such praise is deserved.
4. Be consistent, objective and courteous.
5. Condemn the deliberate 'good foul' as being unsportsmanlike, thus retaining respect for fair play.
6. Publicly encourage law changes, which will reinforce the principles of participation for fun and enjoyment.
7. Make a personal commitment to keep yourself informed on sound refereeing principles and the principles of growth and development of young people.
8. Avoid comment on Competition Rules, only deal with the Laws of the Game.

Remember, the QJRU Management Committee and BJRU Competition Committee have the power to cite Players, Coaches, and/or Spectators for behaviour that may bring the game of Rugby into disrepute.

## **PARENT'S CODE**

1. Do not force an unwilling youngster to participate in Rugby.
2. Remember, young people are involved in Rugby for their enjoyment, not yours.
3. Encourage your child to always play by the laws.
4. Teach young people that honest effort is as important as victory so the result of each game is accepted without undue disappointment.
5. Turn defeat into victory by helping young people work towards skill improvement and good sportsmanship. Never ridicule or yell at your child for making a mistake or losing a game.
6. Remember that young people learn best by example. Applaud good play by your team and by members of the opposing team.
7. Do not publicly question the referee's judgement and never his/her honesty.
8. Support all efforts to remove verbal and physical abuse from Junior Rugby.
9. Recognise the value and importance of volunteer coaches, managers and referees. They give of their time and resources to provide recreational activities for your children.
10. Do not approach a referee/touch judge at any stage during or immediately after a game.

Remember, the QJRU Management Committee and BJRU Competition Committee have the power to cite Players, Coaches, and/or Spectators for behaviour that may bring the game of Rugby into disrepute.

## **SPECTATOR'S CODE**

1. Remember that young people play organised sports for their own fun. They are not there to entertain you and they are not miniature Wallabies.
2. Be on your best behaviour. Don't use offensive language, or harass players, coaches, referees or other spectators.
3. Applaud good play by your own team and the opposition team.
4. Show respect for your team's opponents. Without them there would be no games.
5. Never ridicule or scold a player for making a mistake during the game.
6. Condemn the use of violence in all forms.
7. Respect the referee's decisions.
8. Encourage players to play according to the laws.
9. SLEDGING: THIS CANNOT BE ACCEPTED in any shape or form. Players and Referees are NOT fair game.
10. Do not approach a referee/touch judge at any stage during or immediately after a game.

Remember, the QJRU Management Committee and BJRU Competition Committee have the power to cite Players, Coaches, and/or Spectators for behaviour that may bring the game of Rugby into disrepute.

## APPENDIX 3: JUNIOR GROUND LOCATIONS

(as at 18 Jan 2008)

(\*Please Note: The 48<sup>th</sup> – 50<sup>th</sup> Edition 2004-2006 of the UBD was used in referencing the following)

***Albany Creek-GPS - South Pine Sports Complex*** (UBD Map 108 Ref G11)  
Cribb Rd, Brendale. North on Old Northern Rd from Everton Park. Old Northern Rd continues into South Pine Rd, entry into grounds accessed off Cribb St on right, or via Leitchs Road on right then right on Cribb Street.  
**Club Phone: n/a**

***Ashgrove-GPS - Ashgrove Sports Ground*** (UBD Map 138 Ref K19)  
Yoku Rd, Ashgrove. Along Waterworks Rd and between bus stops 22-23, right into Glenlyon Drive. At stop sign, left into Grevillia Rd and right into Yoku Rd.  
**Club Phone: 3366 2567**

***Ballymore*** (UBD Map 139 Ref L19)  
Clyde Rd, Herston. Proceed along Herston Rd, at lights turn into Scott Rd and then Left into Clyde Rd, or Proceed along Butterfield St to end and turn right into Clyde Rd, entrance on right.

***Beenleigh - Paul Burke Oval*** (UBD Map 284 Ref A9)  
175 Beenleigh Beaudesert Rd, Beenleigh. Just past the Windaroo Tavern.  
**Club Phone: na**

***Bribie Island - Sandstone Point Recreation & Sports Complex*** (UBD Map 52 Ref G18)  
190 Bestmann Rd East Sandstone Point. Proceed north on Bruce Highway towards Caboolture, cross Caboolture River and take Bribie Island Rd exit, follow it all the way to Sandstone Point. Just before you cross to Bribie Island, Bestmann Rd East is on the right. Follow along ground 1.8km on right.  
**Club Phone: n/a**

***Brothers - Crosby Park*** (UBD Map 140 Ref G15)  
Crosby Rd, Albion. Proceed outbound along Sandgate Rd from Breakfast Creek to Albion Fiveways, right into Crosby Rd. Crosby Park is on the right (top oval).  
**Club Phone: 3857 1795**

***Browns Plains*** (UBD Map 240 Ref Q20)  
Logan Metro Sports Park (Browns Plains Smart Tip), 349 Browns Plains Rd, Browns Plains. Proceed south along Beaudesert Rd (Mt Lindsay Highway). Exit left onto Browns Plains Rd, travel for approximately 3kms. Turn Right into the entrance of the Browns Plains Smart tip and fields are located directly on the right.  
**Club Phone: 04 2375 7623**

***Caboolture - Kevin Kaeser Oval*** (UBD Map 57 Ref L17)  
Petersen Rd, Morayfield. Morayfield Rd (at Bunnings), left into Walker Rd, 2nd left into Petersen Rd. Oval approximately 1 km further on.  
**Club Phone: 5498 6400**

***Camp Hill - Whites Hill College*** (UBD Map 181 Ref E5)  
Burn St Camp Hill. Proceed along Samuel St and turn into Burn St, entrance is on the right.  
**Club Phone: n/a**

***East - Bottomley Park*** (UBD Map 24 Ref G15)  
Halifax St, Coorparoo. Drive to the end of Stanley St (South Brisbane) continue on over railway line up hill and then straight down to the grounds.  
**Club Phone: 3843 1577**

**Everton Park - Horse Blake Oval** (UBD Map 138 Ref Q8)  
Hurdcotte St, Enogerra. Proceed outbound along South Pine Rd from Pickering St Roundabout, at traffic lights continue straight ahead into Hurdcotte St. Field is on the right just past Hillbrook School.

**Club Phone: 3355 7670**

**Goodna - Evan Marginson Sports Ground** (UBD Map 216 Ref N12)  
Woogaroo St, Goodna, opposite the RSL. Take Goodna exit off Ipswich Motorway, at lights turn right under the Motorway (left if coming from the West), and the Ground is straight in front of you.

**Club Phone: n/a**

**Ipswich - Woodend Park** (UBD Map 213 Ref C8)  
Woodend Rd, Woodend. Take Ipswich Motorway through Ipswich CBD. Right into Burnett St then the second right into Woodend Rd.

**Club Phone: 3812 2226**

**Kenmore Centenary - Cubberla Creek Reserve** (UBD Map 178 Ref A11)  
Hepworth St, Chapel Hill. Proceed along Moggill Rd, past Centenary Highway, turn left into Sutling St, just before Cubberla Creek, left into Burns Parade, right into Hepworth St and on to the end of the street.

**Club Phone: 3378 6954**

**The Lions - Anthony Short Oval** (UBD Map 194 Ref N8)  
Illawong Way, Karana Downs. Through Kenmore along Moggill Rd, right into Mt Crosby Rd, through Anstead, left into Tanderra Way, right into Colleges Rd, left into Illawong Way. Illawong Reserve is on the left. Entrance under power lines.

**Alternate Route** - Along Ipswich Rd, onto Warrego Highway (to Toowoomba), exit at Mt Crosby Rd/Karana Downs exit, follow Mt Crosby Rd, over Colleges Crossing then right into Colleges Rd, right into Illawong Way. Illawong Reserve is on left.

**Club Phone: 04 1866 3397**

**Logan City - Homestead Park** (UBD Map 243 Ref F8)  
Jodie St, Shailer Park. Proceed along Pacific Highway, take exit to Logan Hyperdome. 1st right into Mandew St, left into Plaintain Rd, left into Shailer Rd, right into Rosalie St, left into Lyndale St, and 2<sup>nd</sup> left is Jodie St.

**Club Phone: 3388 1899**

**North Brisbane Junior Barbarians - Hugh Courtney Oval** (UBD Map 140 Ref G2)  
Shaw Rd, Wavell Heights. North on Gympie Rd from Kedron. Right into Rode Rd, at about 2 km, turn right into Shaw Rd. Ground is on right at about 1 km.

**Club Phone: 3260 5020**

**North Lakes - North Lakes College** (UBD Map 89 Ref P8)  
Memorial Dr, Mango Hill. Turn off ANZAC Av into North Lakes Dr, next right into Memorial Dr and at 4<sup>th</sup> roundabout turn right into the college.

**Club Phone: na**

**Pine Rivers Pumas - Les Hughes Complex** (UBD Map 98 Ref G10)  
Francis Rd, Lawnton. Take Strathpine exit off North Coast Highway - continue on Gympie Rd through Strathpine until Todds Rd. Turn left, then left into Nightingale Dve, turn right through the roundabout into Francis Rd, left into Baker St, ground entrance on left.

**Club Phone: 3889 7574**

**Redcliffe Sea Snakes - Ray Frawley Fields** (UBD Map 91 Ref D13)  
Silcock St, Clontarf. Travel along Elizabeth Ave (Note that it becomes Snook St if travelling from the North & then changes its name back to Elizabeth Ave). From the North turn right into Silcock St, from the South Left, Fields on the right.

**Club Phone: n/a**

**Redlands - Judy Holt Park**

**(UBD Map 184 Ref M9)**

Corner of Randall Rd and Old Cleveland Rd East, Birkdale. Drive along Old Cleveland Rd, through Capalaba Shopping Centre. At 4th set of traffic lights, left into Old Cleveland Rd East, 2 kms along at the first set of lights turn right, this is still Old Cleveland Rd East. Another 1.5 km to Birkdale Tip and turn right, straight ahead takes you to Judy Holt Park.

**Club Phone: 3822 1431**

**Riverside - Bulimba Sports Club**

**(UBD Map 140 Ref K20)**

Bulimba St, Bulimba. Proceed outbound along Wynnum Rd, left into Hawthorne Rd, follow to roundabout, left into Oxford St, after shops right into Bulimba St. Field is on left.

**Club Phone: 04 1772 2753**

**Riverview & Districts - Riverview Primary School**

**(UBD Map 215 Ref G11)**

Old Ipswich Rd, Riverview. Travel along Ipswich Motorway and take Moggil Ferry turn off. Turn into Tessman St, left into Old Ipswich Rd, just past Anderson St (on the Right) turn left into dirt side road that runs along School boundary.

**Club Phone: n/a**

**Springfield - The Lakes Ovals**

**(UBD Map 237 Ref E19)**

Cnr Springfield Lakes Boulevard & Summit Drive, Springfield Lakes. Travel South on Centenary Highway, take off ramp, left at roundabout into Springfield Lakes Boulevard, continue through next roundabout and at the next Roundabout the grounds are on your right.

**Club Phone: n/a**

**Southern Bay - Charlie Buckner Oval**

**(UBD Map 226 Ref H13)**

Boundary Rd, Redland Bay. Follow Cleveland Redland Bay Rd: from the North Pass Double Jump Rd, from the South pass Gordon Rd. and then turn into Boundary Rd and the grounds are on the left. (There is another Boundary Rd to the North in Thornlands)

**Club Phone: n/a**

**Souths - Shaftesbury Oval (Juniors Grounds)**

**(UBD Map 180 Ref D14)**

Shaftesbury St, Ekibin. From Chardons Corner on Ipswich Rd, head along Cracknell Rd 1.3 km. At the shops, turn right into Shaftesbury St. Grounds are on right.

**Club Phone: 3892 6788**

**Souths - Chippy Wood Oval (Seniors Grounds)**

**(UBD Map 179 Ref P13)**

Villa St, Yeronga. Travel along Ipswich Rd and turn into Villa St. Entrance is Opposite Frederick St.

**Club Phone: 3848 3215**

**Sunnybank - Biggs Field**

**(UBD Map 200 Ref R16)**

Corner of McCullough and Grandilla St, Sunnybank. South on Freeway from city. Take Mains Rd exit and continue along Mains Rd to K Mart, turn left into McCullough St, then second left into Grandilla St. Grounds are on the right.

**Club Phone: 3216 9423**

**Taylor Bridge - Graceville Memorial Park**

**(UBD Map 178 Ref L12)**

Corner Oxley Rd and Plumridge St, Graceville. Travel South on Coonan St Indooroopilly (FROM TOWN), across the Walter Taylor Bridge. Left immediately after crossing the bridge into Bridge St, Right at lights into Wharf St which becomes Oxley Rd. Follow along Oxley Rd to Plumridge St (fourth street on right). Parking available in the grounds simply by proceeding a further 200 m along Oxley Rd. Entry into grounds immediately opposite the tennis courts.

**Club Phone: 3379 1978**

**The Lakes - Forest Lake State High School**

**(UBD Map 218 Ref J20)**

High St, Forest Lake. Proceed along Forest Lake Bvd to the lights at High St, turn left, entrance on left.

**Alternate Ground - Forest Lake State School (UBD Map 218 Ref D15)**

Kauri Pl, Forest Lake. Proceed along Forest Lake Bvd and turn into Woogaroo St, then at roundabout, left into Kauri Pl, entrance on left.

**Club Phone: na**

***Wests - Memorial Park***

**(UBD Map 159 Ref B16 or Map 21 Ref B11)**

Sylvan Rd. Toowong. Travel west along Coronation Dve from city. Turn right just past the Wesley Hospital into Land St. Follow it around, then turn right into Sylvan Rd under railway bridge. Oval on right.

**Club Phone: N/A**

***Wynnum - Elanora Park***

**(UBD Map 143 Ref G14)**

Granada St, Wynnum North. Follow Wynnum Rd east to Tingalpa, veer left and continue along Wynnum Rd past Wynnum Golf Course. Cross railway lines (becomes Glenora St), 5th left into Granada Street. Grounds are on right adjacent to Wynnum RSL Bowls Club.

**Club Phone: 3893 1305**

#### APPENDIX 4: SENIOR GROUND LOCATIONS

CLUB	NAME OF VENUE	ADDRESS		
Beaudesert	Everdell Park		Mt Lindesay Highway	Gleneagle
Beenleigh	Windaroo Oval		175 Beenleigh-Beaudesert Road	Windaroo
Bond University	Pizzey Park		Sonia Street	Mermaid Waters
Brisbane Irish	Horse Blake Oval	Memorial Park	Hurdcotte Street	Enoggera
Brothers	Crosby Park 1 & 2		Crosby Road	Albion
Browns Plains	JJ Smith Park		First Avenue	Marsden
Cromwell COBRAs	Memorial Park		Sylvan Road	Toowong
Deception Bay Cyclones	The Sports Oval	Deception Bay Sports	Maine Terrace	Deception Bay
Easts	Bottomley Park 1, 2 & 3		Halifax Street	Coorparoo
Easts Longhorns	Bottomley Park 1		Halifax Street	Coorparoo
Everton Park JRU	Horse Blake Oval	Memorial Park	Hurdcotte Street	Enoggera
Gold Coast	Albert Park		Fremar Street	Broadbeach Waters
	Palm Beach Currumbin RC	Alleygator Park	Bienvenue Drive	Currumbin Waters
Goodna	Evan Marginson Oval		Woogaroo Street	Goodna
GPS	Ashgrove Sports Ground 1, 2 & 3		Yoku Road	Ashgrove
	Colt 3 - GPS 2	Brendale	Cribb Road	Brendale
Ipswich	Woodend Park 1 7 2		Woodend Road	Woodend
Lawlords	Sunnybank		470 McCullough Street	Sunnybank
Logan City	Homestead Park 1 & 2		Jodie Street	Shailer Park
Norths-QUT	Shaw Spotrz 1, 2 & 3		Shaw Road	Wavell Heights
Pacific Island Rugby Club	Griffith University	Nathan Campus	Kessels Road	Nathan
Pine Rivers Boars	John Oxley Reserve		Cnr Ogg and Dohles Rocks Roads	Murrumba Downs
Pine Rivers Pumas	Les Hughes Sporting Complex		Baker Street	Bray Park

<b>CLUB</b>	<b>NAME OF VENUE</b>	<b>ADDRESS</b>		
<b>Redlands</b>	Judy Holt Park 1 & 2		Old Cleveland Road East	Birkdale
<b>Southern Bay Cyclones RC</b>	Charlie Buckler Oval		Boundary Street	Redland Bay
<b>Souths</b>	Chipsy Wood Oval		Frederick Street	Annerley
	Shaftesbury Oval		Shaftesbury Street	Ekibin
<b>Souths - Rebels</b>	Chipsy Wood Oval		Frederick Street	Annerley
<b>Sunnybank</b>	Oldmac Oval, Sunnybank 2 & 3		470 McCullough Street	Sunnybank
<b>Sunshine Coast Rugby Union</b>	Maroochydore RC		4th & 5th Avenues	Maroochydore
	Noosa RC		Bicentennial Drive	Sunshine Beach
	University of Sunshine Coast RC		Cnr Sippy Downs Drive & Stringybark Road	Sippy Downs
<b>Univerity of Queensland</b>	University of Queensland 1 (5A)		Sir William MacGregor Drive	St Lucia
	University of Queensland 2 (5B)		Sir William MacGregor Drive	St Lucia
<b>UQ - Gatton</b>	UQ - Gatton Campus	Hugh Courtney Oval	Warrego Highway	Gatton
<b>UQ - Medicals</b>	University of Queensland 2 (5B)		Sir William MacGregor Drive	St Lucia
<b>UQ - TC Bierne Law</b>	University of Queensland 2 (5B)		Sir William MacGregor Drive	St Lucia
<b>UQ - Vet Science</b>	University of Queensland 2 (5B)		Sir William MacGregor Drive	St Lucia
<b>Wests</b>	Memorial Park 1 & 2		Sylvan Road	Toowong
<b>Wynnum</b>	Elanora Park 1 & 2		Granada Street	Wynnum North

## APPENDIX 5: BJRU 2009 CALENDAR

Date	Time	Event	Location	Remarks
12/01/2009	7.00pm	BJRU Management Committee Meeting	Rugby House	
17/01/2009	9.00am - 3.00pm	Registrars meeting - For New Registrars	Rugby House	All Clubs to have a Rep at one of the 2 days
18/01/2009	9.00am - 12.00pm	Registrars meeting - For Experienced Registrars	Rugby House	
21/01/2009	6.00pm-8.30pm	Smart Rugby course	Ballymore	QRU Accreditation Manager
26/01/2009		Australia Day Holiday		
31/01/2009	TBA	Sign On commences Clubs choose days to suit.	Club details on Web	
1/02/2009		Sign On continues	Clubs	Ads appear in local paper week leading up to 4th Feb
4/02/2009	6.00pm - 8.30pm	Smart Rugby course	Ballymore	QRU Accreditation Manager
7/02/2009		Reds Vs Hurricanes	Suncorp Stadium	
7/02/2009		Sign On continues	Clubs	
8/02/2009		Sign On continues	Clubs	
10/02/2009	5.30pm	BJRU Management Committee Meeting	Rugby House	
10/02/2009	7.00pm	Club Presidents Meeting - BJRU Inc General Meeting	Rugby House	All Clubs to have a Representative
11/02/2009	6:30pm - 8:30pm	Open Forum - Regionalised - by club at clubs - required by all clubs	Redlands	
13/02/2009	6:00pm	U16 & U17 Pre Season competition team nominations due		Use Comp Rules Annex A - Team Nom Form
13/02/2009		Field Availability Due - for 22 Feb - 25 Apr		
14/02/2009		Bulls Vs Reds	Pretoria	
14/02/2009		Sign On continues	Clubs	
14/02/2009	8.00-4.00	Proposed QRU Education Weekend	Ballymore	Book early
15/02/2009	3pm	Rep Team Management & Selectors Meeting	TBC	
15/02/2009		Sign On continues or Club Organised Events	Clubs	
16/02/2009	6.30pm - 8.30pm	Open Forum - Regionalised - by club at clubs - required by all clubs	Wynnum	All clubs to host a forum or in combinaton with surrounding clubs.Dates - first in, first pick
17/02/2009		Open Forum - Regionalised - by club at clubs - required by all clubs		
18/02/2009		Open Forum - Regionalised - by club at clubs - required by all clubs	Logan/Brothers	
18/02/2009	6.00pm - 8.30pm	Smart Rugby course	Ballymore	QRU Accreditation Manager
19/02/2009	6.30pm - 8.30pm	Open Forum - Regionalised - by club at clubs - required by all clubs		
20/02/2009		Stormers Vs Reds	Cape Town	
20/02/2009		Applications to host U16 & 17 Pre season Grand Finals due		1 - 2 fields required
20/02/2009	6pm-7pm	Open Forum - Regionalised - by club at clubs - required by all clubs	Sunnybank	
21/02/2009		Sign On continues or Club Organised Events or Carnivals	Clubs	
22/02/2009		U16 & 17 Pre Wk 1	Clubs	U16 - 3.30pm, U17 - 4.40pm for Pre Only
22/02/2009		U16 - 17 Team Lists Due		Use Comp Rules Annex B - Team List Form
23/02/2009	6.30pm - 8.30pm	Open Forum - Regionalised - by club at clubs - required by all clubs	Brothers/Redcliffe	All clubs to host a forum or in combinaton with surrounding clubs.Dates - first in, first pick
24/02/2009		Open Forum - Regionalised - by club at clubs - required by all clubs		
25/02/2009	6.30pm-7.30pm	Open Forum - Regionalised - by club at clubs - required by all clubs	Ipswich	
26/02/2009		Open Forum - Regionalised - by club at clubs - required by all clubs		

Date	Time	Event	Location	Remarks
27/02/2009	6pm- 7.30pm	Open Forum - Regionalised - by club at clubs - required by all clubs		
28/02/2009	8.00-4.00	Proposed QRU Education Weekend	Ballymore	
28/02/2009		Club Organised Events or Carnivals	Clubs	
1/03/2009		Reds Vs Cheetahs	Suncorp Stadium	
1/03/2009	3.50 & 5pm	Club Organised Events or Carnivals U16 & 17 Pre Wk 2	Clubs	U16 - 3.30pm, U17 - 4.40pm for Pre Only
2/03/2009		Open Forum - Regionalised - by club at clubs - required by all clubs	Pine Rivers	All clubs to host a forum or in combinaton with surrounding clubs.Dates - first in, first pick
3/03/2009		Open Forum - Regionalised - by club at clubs - required by all clubs	Easts	
4/03/2009	6.30-8pm	Open Forum - Regionalised - by club at clubs - required by all clubs		
4/03/2009	6.00pm - 8.30pm	Smart Rugby course	Ballymore	QRU Accreditation Manager
5/03/2009		Open Forum - Regionalised - by club at clubs - required by all clubs		
6/03/2009	6.00pm	U10 - 15 Team Nominations Due		Use Comp Rules Annex A - Team Nom Form
6/03/2009		Open Forum - Regionalised - by club at clubs - required by all clubs		
6/03/2009		Waratahs Vs Reds	Sydney	
7/03/2009		Club Organised Events or Carnivals		
8/03/2009		Club Organised Events or Carnivals U16 & 17 Pre Wk 3	Clubs	U16 - 3.30pm, U17 - 4.40pm for Pre Only
8/03/2009		Wynnum Carnival U6-15s (see Note in Returns at top)	Wynnum	
9/03/2009	6.30pm	BJRU Management Committee Meeting	Rugby House	
10/03/2009	6:00pm	Walla Coaching & Refereeing Course	Ballymore	Based on minimum of 10 attendees
10/03/2009		Open Forum - Regionalised - by club at clubs - required by all clubs	Ashgrove/Everton Pk	All clubs to host a forum or in combinaton with surrounding clubs.Dates - first in, first pick
11/03/2009		Open Forum - Regionalised - by club at clubs - required by all clubs	Souths	
13/03/2009	6.00pm	U6 - 9 Team Nominations Due		Use Comp Rules Annex A - Team Nom Form
14/03/2009		Reds Vs Sharks	Suncorp Stadium	
14/03/2009		JUNIOR CLUBS MARCH PAST	Suncorp Stadium	
15/03/2009		U10-15 Grading Game 1 U16 & 17 Pre Wk 4	Clubs	U16 - 3.30pm, U17 - 4.40pm for Pre Only
16/03/2009		Open Forum - Regionalised - by club at clubs - required by all clubs	Wests	All clubs to host a forum or in combinaton with surrounding clubs.Dates - first in, first pick
17/03/2009	7-8.30pm	Open Forum - Regionalised - by club at clubs - required by all clubs	Caboolture	
18/03/2009	6.30-8pm	Open Forum - Regionalised - by club at clubs - required by all clubs		
19/03/2009	6:00pm	Walla Coaching & Refereeing Course	Sunnybank	Based on minimum of 10 attendees
21/03/2009	8.30 - 11.30am	U6-9 Pre-Season Games Wk1	Clubs	
22/03/2009	8:30am - 5.40pm	U10-15 Grading Game 2 U16 & 17 Pre Wk 5	Clubs	U16 - 3.30pm, U17 - 4.40pm for Pre Only
22/03/2009		Foundation Course	Ballymore	QRU Accreditation Manager
23/03/2009		Open Forum - Regionalised - by club at clubs - required by all clubs		All clubs to host a forum or in combinaton with surrounding clubs.Dates - first in, first pick
24/03/2009	7-8.30pm	Open Forum - Regionalised - by club at clubs - required by all clubs		
25/03/2009	6.45 -9pm	Open Forum - Regionalised - by club at clubs - required by all clubs	Kenmore	
27/03/2009	6.00pm	U10 - 15 Competition Team Nominations Due		Use Comp Rules Annex A - Team Nom Form
27/03/2009	6.00pm	Field Availability Due - for 25 Apr - 7 Sept		
28/03/2009		Reds Vs Chiefs	Suncorp Stadium	
28/03/2009	8.30 - 11.30am	U6-9 Pre-Season Games Wk 2		

Date	Time	Event	Location	Remarks
29/03/2009	8:30am - 5.40pm	U10-15 Grading Game 3 - Last	Clubs	U16 - 3.30pm, U17 - 4.40pm for Pre Only
29/03/2009	TBA	U16 & 17 Pre Grand Finals	TBA	U16 & U17 times TBA dependent on field & divs nos
30/03/2009	5:00pm	Applications to host select trials, poss v prob, U12 carnival, mid and end season Finals due		See Rep Docs for field requirements
31/03/2009	6:00pm	Walla Coaching & Refereeing Course	Eastes	Based on minimum of 10 attendees
1/04/2009	6.00pm - 8.30pm	Smart Rugby course	Ballymore	QRU Accreditation Manager
3/04/2009	6.00pm	U16 - 17 Mid Season Nominations Due		Use Comp Rules Annex A - Team Nom Form
3/04/2009		Force Vs Reds	Perth	
4/04/2009	8am - 11.30am	U6-9 Pre Season Games Wk 3		
4/04/2009	1-5pm	Mini Referee Course TBC depending on nominations min 15	Rugby House	Based on minimum of 15 attendees
5/04/2009		U10 - 17 Team Lists Due		
5/04/2009		U10 - 15 Rd 1 Game 1	Clubs	
7/04/2009	6:30pm	Walla Coaching & Refereeing Course	Caboolture	Based on minimum of 10 attendees
10/04/2009		Good Friday		
11/04/2009		School Holidays		
11/04/2009		Highlanders Vs Reds		
11/04/2009		Easter		
12/04/2009		Easter Sunday		
13/04/2009		Easter Monday	Rugby House	
14/04/2009	5.30pm	BJRU Management Committee Meeting	Rugby House	
14/04/2009	7.00pm	Club Presidents Meeting - BJRU Inc General Meeting	Rugby House	All Clubs to have a Representative
15/04/2009	6.00pm - 8.30pm	Smart Rugby course	Ballymore	QRU Accreditation Manager
18/04/2009		Reds Vs Lions	Suncorp Stadium	
18/04/2009		School Holidays		
19/04/2009		School Holidays		
21/04/2009	6.00pm	Walla Coaching & Refereeing Course	Ashgrove	Based on minimum of 10 attendees
24/04/2009	6.00pm	U6-9 Team Nominations Due		Use Comp Rules Annex A - Team Nom Form
24/04/2009		Blues Vs Reds	Auckland	
25/04/2009		ANZAC DAY		
26/04/2009		U10 - 15 Rd 1 Game 2 U16 & 17 Mid Wk 1	Clubs	Players are now set in these teams
26/04/2009		U12 Skills Development Selection Trials All U12 games at one location		U11's and U12s require min 3 fields each
29/04/2009	6.00pm - 8.30pm	Smart Rugby course	Ballymore	QRU Accreditation Manager
29/04/2009	6.00pm - 8.30pm	Smart Rugby course	Ballymore	QRU Accreditation Manager
30/04/2009	6:00pm	Walla Coaching & Refereeing Course (Last course)	Ballymore	Based on minimum of 10 attendees
2/05/2009		Reds Vs Brumbies	Suncorp Stadium	
2/05/2009		U6-9 Rd 1 Game 1	Clubs	Coaches allowed on fields for first round of games
2/05/2009		U6 - 9 Team Lists Due		Use Comp Rules Annex B - Team List Form
3/05/2009		U10-15 Rd 1 Game 3 U16 & 17 Mid Wk 2	Clubs	
3/05/2009	9am - 4pm	U13-17 Selector Viewing Games (each age at one ground)	TBA	These are Competition games 1 age group at 1 club each

Date	Time	Event	Location	Remarks
4/05/2009		Labour Day (See Below P v P games)		Min 2 fields required
4/05/2009	10am-12noon	U13-14 Possible V Probable Games and sizings	TBA	Min 2 fields required
4/05/2009	12noon-2pm	U15-16 Possible V Probable Games and sizings	TBA	Min 2 fields required
4/05/2009	2pm - 4pm	U17 Possible V Probable Games and sizings	TBA	
6/05/2009	6.00pm - 8.30pm	Smart Rugby course	Ballymore	QRU Accreditation Manager
8/05/2009		Crusaders Vs Reds	Christchurch	
9/05/2009		Proposed QRU Education Weekend	Ballymore	Level 1 - referee/Coaches/Smart rugby etc
9/05/2009		U6-9 Rd 1 Game 2	Clubs	
10/05/2009	1pm - 5pm	Mini Referee Course TBC depending on nominations	Rugby House	Based on minimum of 15 attendees
10/05/2009		U10-15 Rd 1 Game 4 U16 & 17 Mid Wk 3	Clubs	
11/05/2009	TBA	Representative Training & U12 Skills Development Training		Team Managers will advise times
12/05/2009	6.30pm	BJRU Management Committee Meeting	Rugby House	
16/05/2009		Reds Vs Hurricanes		
16/05/2009		U6-9 Rd 1 Game 3	Clubs	
17/05/2009		U10-15 Rd 1 Game 5 (Ashgrove Walkathon) U16 & 17 Mid Wk 4	Clubs	Clubs to make alternate arrangements if necessary asap
18/05/2009	5pm	Re-Grading Requests 6 Team Divs U10 - U15		
18/05/2009	TBA	Representative Training & U12 Skills Development Training		Team Managers will advise times
20/05/2009	6.00pm - 8.30pm	Smart Rugby course	Ballymore	QRU Accreditation Manager
22/05/2009		Super 14 Semi Finals		
23/05/2009		Super 14 Semi Finals		
23/05/2009		U6-9 Rd 1 Game 4	Clubs	
24/05/2009		U10-15 Rd 1 Game 6 U16 & 17 Mid Wk 5	Clubs	
25/05/2009	TBA	Representative Training & U12 Skills Development Training		Team Managers will advise times
30/05/2009		Super 14 Grand Final		
30/05/2009		U6-9 Rd 1 Game 5	Clubs	
31/05/2009		U10-15 Rd 1 Game 7 U16 & 17 Mid Wk 6	Clubs	
1/06/2009	TBA	Representative Training & U12 Skills Development Training		Team Managers will advise times
1/06/2009	5pm	Re-Grading Requests 8 Team Divs U10 - U15		
5/06/2009		Mid Season Finals Directive issued		
6/06/2009		U6-9 Rd 1 Game 6	Clubs	
7/06/2009		U10-15 Rd 2 Game 1 U16 & 17 Mid Wk 7	Clubs	
8/06/2009		Queens Birthday		
8/06/2009	TBA	Representative Training & U12 Skills Development Training		Team Managers will advise times
13/06/2009		Wallabies Vs Italy	Canberra	
13/06/2009		U6-9 Rd 1 Game 7 - Last week U8 - 9 coaches on fields	Clubs	Last week U9 & U10 coaches allowed on fields
14/06/2009		U10-15 Rd 2 Game 2 U16 & 17 Mid Wk 8	Clubs	
14/06/2009		Proposed QRU Education Weekend - Walla to Pathway		Walla to Pathway etc
15/06/2009	TBA	Representative Training & U12 Skills Development Training		Team Managers will advise times

Date	Time	Event	Location	Remarks
15/06/2009		Foundation Course	Ballymore	QRU Accreditation Manager
16/06/2009	5.30pm	BJRU Management Committee Meeting	Rugby House	
16/06/2009	7pm	Club Presidents Meeting - BJRU Inc General Meeting	Rugby House	All Clubs to have a Representative
20/06/2009		Wallabies Vs Italy	Melbourne	
20/06/2009		U6-9 Rd 2 Game 1 Coaches off fields U8 - 9	Clubs	All coaches off fields and behind ropes for U9 - U10
21/06/2009		U10-15 Rd 2 Game3 U16 & 17 Mid Grand Finals	Clubs	U16 & U17 times TBA dependent on field & divs nos
22/06/2009	TBA	Representative Training & U12 Skills Development Training		
27/06/2009		School Holidays begin		Team Managers will advise times
27/06/2009		Wallabies Vs France	Sydney	
27/06/2009		U12 Skills Development Carnival		
28/06/2009		U12 Skills Development Carnival		
29/06/2009	TBA	Representative Training		Team Managers will advise times
30/06/2009		QJRU State Championships Team Management meeting		1 coach and manager from each team must attend
2/07/2009		QJRU U13-16 State Championships Day 1 Incl U17 Carnival	TBA	
3/07/2009		QJRU U13-16 State Championships Day 2 Incl U17 Carnival	TBA	
4/07/2009		QJRU U13-16 State Championships Day 4 Incl U17 Carnival	TBA	
5/07/2009		QJRU U13-16 State Championships Day 5 Incl U17 Carnival	TBA	
11/07/2009		School Holidays		
12/07/2009		School Holidays		
12/07/2009		Mini Referee Course TBC depending on nominations - Final course		Based on minimum of 15 attendees
13/07/2009	6.30pm	BJRU Management Committee Meeting	Rugby House	
13/07/2009		U12 - 17 Rep Team Management Post Reports due		Use template sent out
18/07/2009	4.30pm	U12 -17 Rep Team Management Open Forum Dinner	Redlands	All Rep Team Mangement asked to attend
18/07/2009		All Blacks Vs Wallabies	Auckland	
18/07/2009		U6-9 Rd 2 Game 2	Clubs	
19/07/2009		U10-15 Rd 2 Game 4	Clubs	
24/07/2009	6.00pm	U16 & 17 End Season Team Nominations Due		Use Comp Rules Annex A - Team Nom Form
24/07/2009		Springboks Vs All Blacks	Bloemfontain	
25/07/2009		U6-9 Rd 2 Game 3	Clubs	Last GPS game
26/07/2009		U10-15 Rd 2 Game 5	Clubs	
31/07/2009		Finals Directive issued U13 - 15		Teams should have dispensation requests organised including medical certs
1/08/2009		Springboks Vs All Blacks	Durban	
1/08/2009		U6-9 Rd 2 Game 4	Clubs (Show Week)	
2/08/2009		U16 - 17 Team Lists Due		Use Comp Rules Annex B - Team List Form
2/08/2009		U10-15 Rd 2 Game 6 U16 & 17 End Wk 1	Clubs (Show Week)	
8/08/2009		Springboks Vs Wallabies	Cape Town	
8/08/2009		U6-9 Rd 2 Game 5	Clubs	

Date	Time	Event	Location	Remarks
9/08/2009		U10-15 Rd 2 Game 7 Last Games U10-12 U16 & 17 End Wk 2	Clubs	
11/08/2009	5.30pm	BJRU Management Committee Meeting	Rugby House	
11/08/2009	7pm	Club Presidents Meeting - BJRU Inc General Meeting	Rugby House	All Clubs to have a Representative
12/08/2009		Brisbane Show Holiday		Possible Make up game day
12/08/2009		Compulsory Mid Week Game	SHOW HOLIDAY	
14/08/2009		Finals Directive issued U16 - 17		Teams should have dispensation requests organised including medical certs
15/08/2009		U6-9 Rd 2 Game 6	Clubs	
16/08/2009		U13-15 Semi- Finals U16 End Wk 4 & 17 End Wk 3	Clubs	Times to be advised dependent on field and divs nos
22/08/2009		Wallabies Vs All Blacks	Sydney	
22/08/2009		U6-9 Rd 2 Game 7 - Last Game - Season Ends		
23/08/2009		U13-15 Preliminary Finals U16 End Wk 5 & 17 End Wk 4		Times to be advised dependent on field and divs nos
28/08/2009	7pm	BJRU Dinner, Pre Drinks from 6pm	TBA	
29/08/2009		Kenmore Walla/Mini Carnival (see note in Returns)	Kenmore	
29/08/2009		Ashgrove Midi Carnival	Ashgrove	
29/08/2009		Wallabies Vs Springboks	Perth	
30/08/2009	8.30am - 6.00pm	U13-16 Grand Finals U17 End Wk 5	TBA	Times to be advised dependent on field and divs nos
5/09/2009		Wallabies Vs Springboks	Brisbane	
6/09/2009		U17 End Wk 5		
12/09/2009		All Blacks Vs Springboks	Hamilton	
13/09/2009		U17 End Wk 6		
13/09/2009		Club End of Year Functions		
14/09/2009	6.30pm	BJRU Management Committee Meeting	Rugby House	
14/09/2009		Club End of Year Functions		
19/09/2009		All Blacks Vs Wallabies	Wellington	
19/09/2009		School Holidays to 4 Oct		
19/09/2009		U17 End Div 3 Grand Finals	Ballymore	
20/09/2009		U17 End Grand Finals	Ballymore	
9/10/2009		Request for nominations U12-17 Rep Team Management		
12/10/2009	6.30pm	BJRU Management Committee Meeting	Rugby House	
2/11/2009		Rep Team Management & Selectors Nominations due		All nominations are to come through clubs unless nominee is not attached to a club
8/11/2009	11am	BJRU Inc AGM	Rugby House	All Clubs to have a Representative
16/11/2009	6.30pm	BJRU Management Committee Meeting	Rugby House	
20/11/2009		U12-16 Rep Team Management Positions offered		
11/12/2009		Further Invitations issued U12-16 Team Management		
14/12/2009	6.30pm	BJRU Management Committee Meeting	Rugby House	

*The Pumas gratefully acknowledge the support of the following Sponsors in 2008  
And we look forward to working with them again in 2009.*



**Queensland Government**

Department of **Sport and Recreation**

**Moreton Bay Regional Council**  
Incorporating Caboolture, Pine Rivers and Redcliffe



*Be impressive.*

p. (07) 3881 3133

f. (07) 3881 3260

e. sales@kkp.com.au

172 South Pine Road  
Brendale Qld 4500



**Rush Creek  
Earthmoving**

Contact Chris Leech  
on 0421 449 133  
or 0416 200 249

Thank you to Peter Dutton and staff for their help in printing our weekly newsletter.



**PETER DUTTON MP**  
FEDERAL MEMBER FOR DICKSON

*Working hard for an even better Dickson.*